

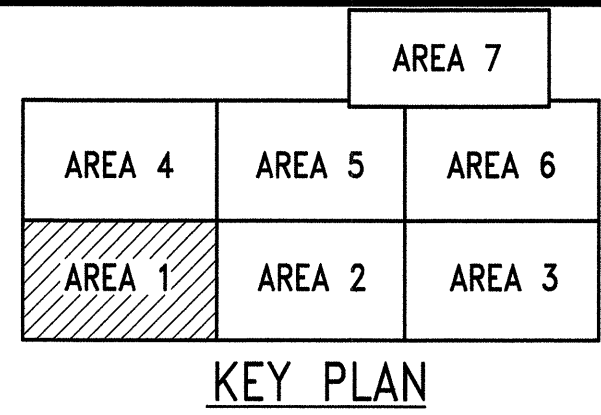


Terminal 5 Uplands Modernization and Rehabilitation Project Final Phase

U.S. DEPARTMENT OF TRANSPORTATION
National Infrastructure Investments
DTOS59-20-RA-BUILD

APPENDIX F1

TERMINAL 5 ANTICIPATED HISTORICAL PAVEMENT THICKNESS



REMEDIA
AREA 1

TRANSIT
SHED

8" ACP OVER 12"
CRUSHED ROCK BASE.
REF. PROJECT: 5-9507

8" ACP OVER 12"
CRUSHED ROCK
BASE.
REF. PROJECTS:
5-9507

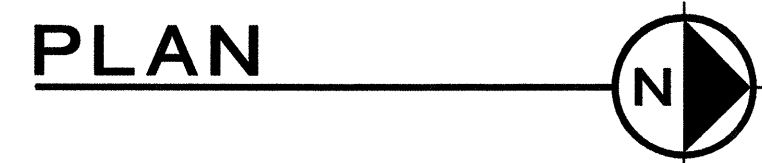
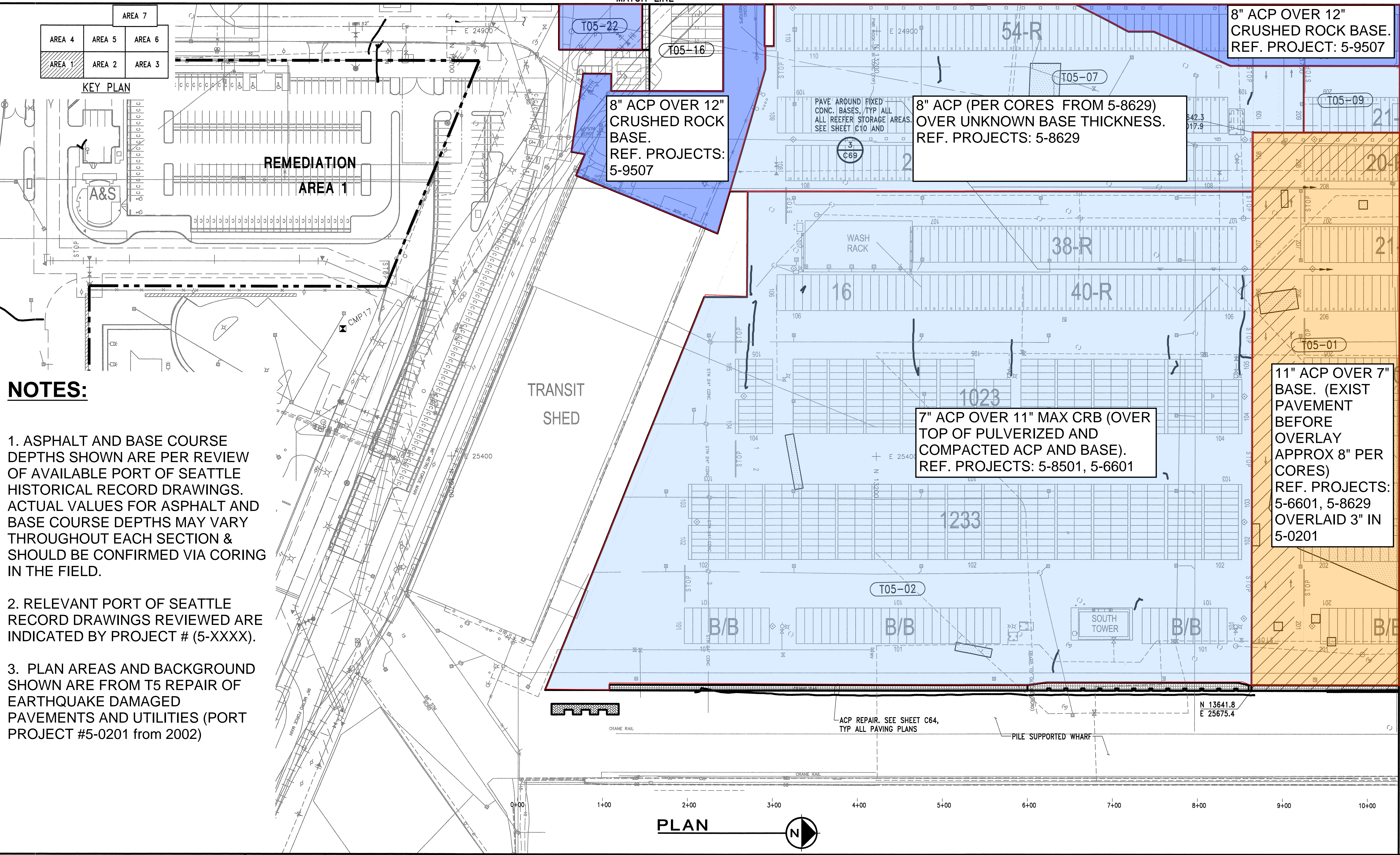
8" ACP (PER CORES FROM 5-8629)
OVER UNKNOWN BASE THICKNESS.
REF. PROJECTS: 5-8629

11" ACP OVER 7"
BASE. (EXIST
PAVEMENT
BEFORE
OVERLAY
APPROX 8" PER
CORES)
REF. PROJECTS:
5-6601, 5-8629
OVERLAID 3" IN
5-0201

7" ACP OVER 11" MAX CRB (OVER
TOP OF PULVERIZED AND
COMPACTED ACP AND BASE).
REF. PROJECTS: 5-8501, 5-6601

NOTES:

1. ASPHALT AND BASE COURSE DEPTHS SHOWN ARE PER REVIEW OF AVAILABLE PORT OF SEATTLE HISTORICAL RECORD DRAWINGS. ACTUAL VALUES FOR ASPHALT AND BASE COURSE DEPTHS MAY VARY THROUGHOUT EACH SECTION & SHOULD BE CONFIRMED VIA CORING IN THE FIELD.
2. RELEVANT PORT OF SEATTLE RECORD DRAWINGS REVIEWED ARE INDICATED BY PROJECT # (5-XXXX).
3. PLAN AREAS AND BACKGROUND SHOWN ARE FROM T5 REPAIR OF EARTHQUAKE DAMAGED PAVEMENTS AND UTILITIES (PORT PROJECT #5-0201 from 2002)



7-09-02

MATCH LINE

8" ACP OVER 12" CRUSHED ROCK BASE.
REF. PROJECT: 5-9507

8" ACP OVER 12" CRUSHED ROCK BASE.
REF. PROJECTS: 5-9507

8" ACP OVER 12" CRUSHED ROCK BASE.
REF. PROJECT: 5-9507

8" ACP OVER 12" CRUSHED ROCK BASE.
REF. PROJECTS: 5-9301

8" ACP PER CORES IN 5-8629
(UNKNOWN CRUSHED ROCK BASE)
REF. PROJECT: 5-8629

UNKNOWN (SUSPECT 7" ACP OVER 7" CRUSHED ROCK BASE)
REF. PROJECTS: 5-6601, 5-7702, 5-0201

11" ACP OVER 7" BASE.
(EXIST PAVEMENT BEFORE OVERLAY APPROX 8" PER CORES)
REF. PROJECTS: 5-6601, 5-8629
OVERLAID 3" IN 5-0201

12" TO 13" ACP OVER 7" CRUSHED ROCK BASE.
REF. PROJECTS: 5-6604, 5-9309
OVERLAID 7.5" IN 5-9802

12 TO 13" ACP OVER 7" CRUSHED ROCK BASE.
REF. PROJECT: 5-6604
OVERLAID 7.5" IN 5-9802

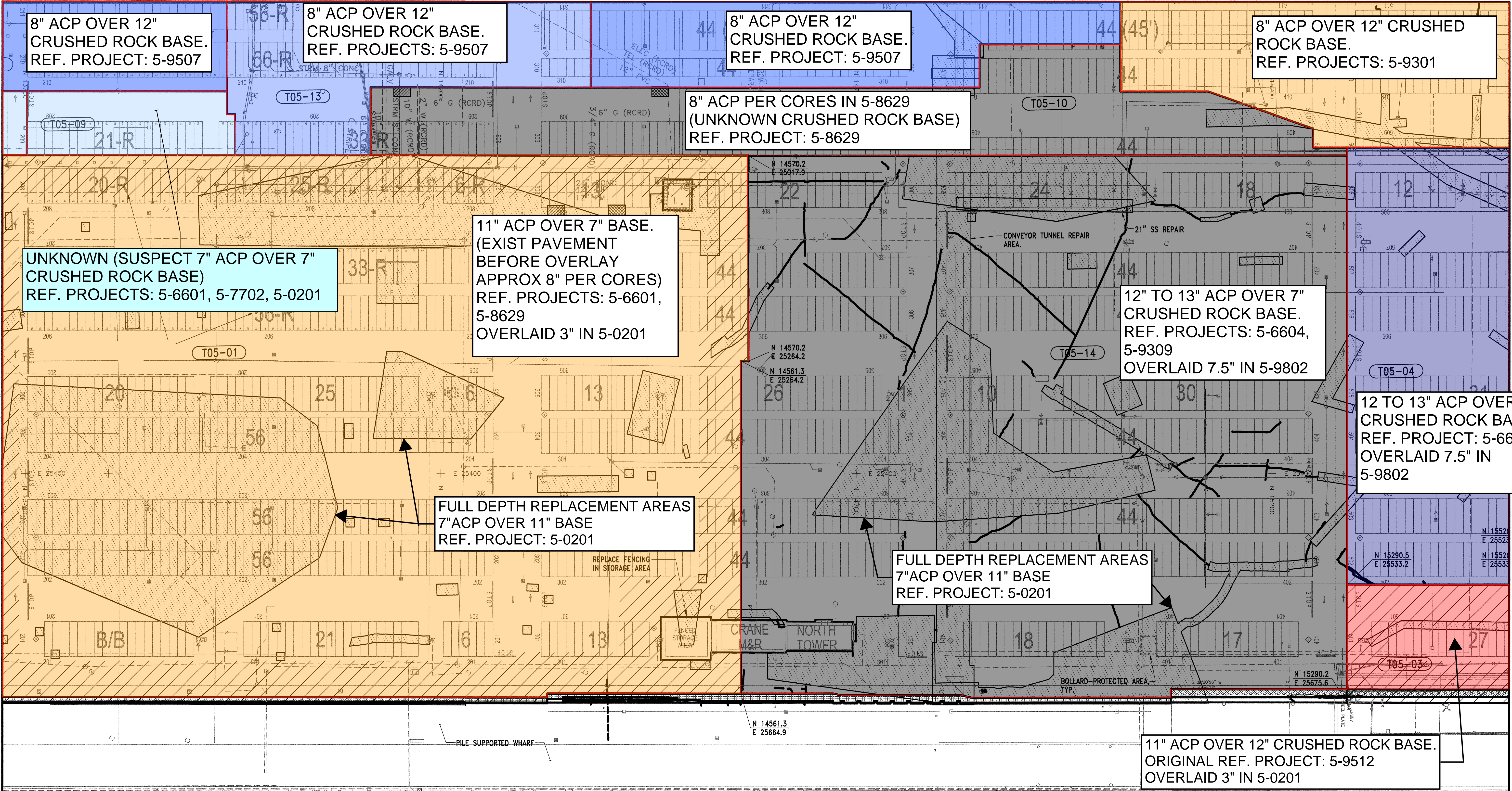
FULL DEPTH REPLACEMENT AREAS
7" ACP OVER 11" BASE
REF. PROJECT: 5-0201

FULL DEPTH REPLACEMENT AREAS
7" ACP OVER 11" BASE
REF. PROJECT: 5-0201

11" ACP OVER 12" CRUSHED ROCK BASE.
ORIGINAL REF. PROJECT: 5-9512
OVERLAID 3" IN 5-0201

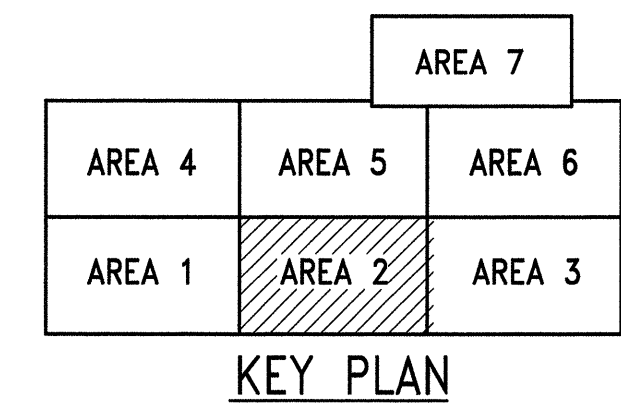
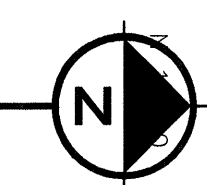
MATCH LINE

MATCH LINE



9+00 10+00 11+00 12+00 13+00 14+00 15+00 16+00 17+00 18+00 19+00 20+00 21+00 22+00 23+00 24+00 25+00 26+00 27+00

PLAN



7-09-02 050201C058.DWG

CALL 48 HOURS BEFORE YOU DIG
1-800-424-5555



1601 5th Avenue, Suite 1300
Seattle, Washington 98101
(206) 382-0600 Fax (206) 382-0500

**TERMINAL 5
PAVEMENT THICKNESS HISTORY EXHIBIT
DRAFT
2019-05-16 REV1**

MATCH LINE

8" ACP OVER 12" CRUSHED ROCK BASE.
REF. PROJECTS: 5-9301

12 TO 13" ACP OVER 7" CRUSHED ROCK BASE.
REF. PROJECT: 5-6604
OVERLAID 7.5" IN 5-9802

FULL DEPTH REPLACEMENT AREAS
7" ACP OVER 11" BASE
REF. PROJECT: 5-0201

10" ACP OVER 12" CRUSHED ROCK BASE.
REF. PROJECTS: 5-8607,
5-8804, 5-8907
OVERLAID 3" IN 5-0201

8" ACP OVER 12" CRUSHED ROCK BASE.
REF. PROJECTS: 5-9603

11" ACP OVER 12" CRUSHED ROCK BASE.
ORIGINAL REF. PROJECT: 5-9512
OVERLAID 3" IN 5-0201

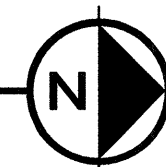
REMEDIATION AREA 5

ELLIOTT BAY

MATCH LINE

PIERHEAD LINE

PLAN



		AREA 7
AREA 4	AREA 5	AREA 6
AREA 1	AREA 2	AREA 3

KEY PLAN

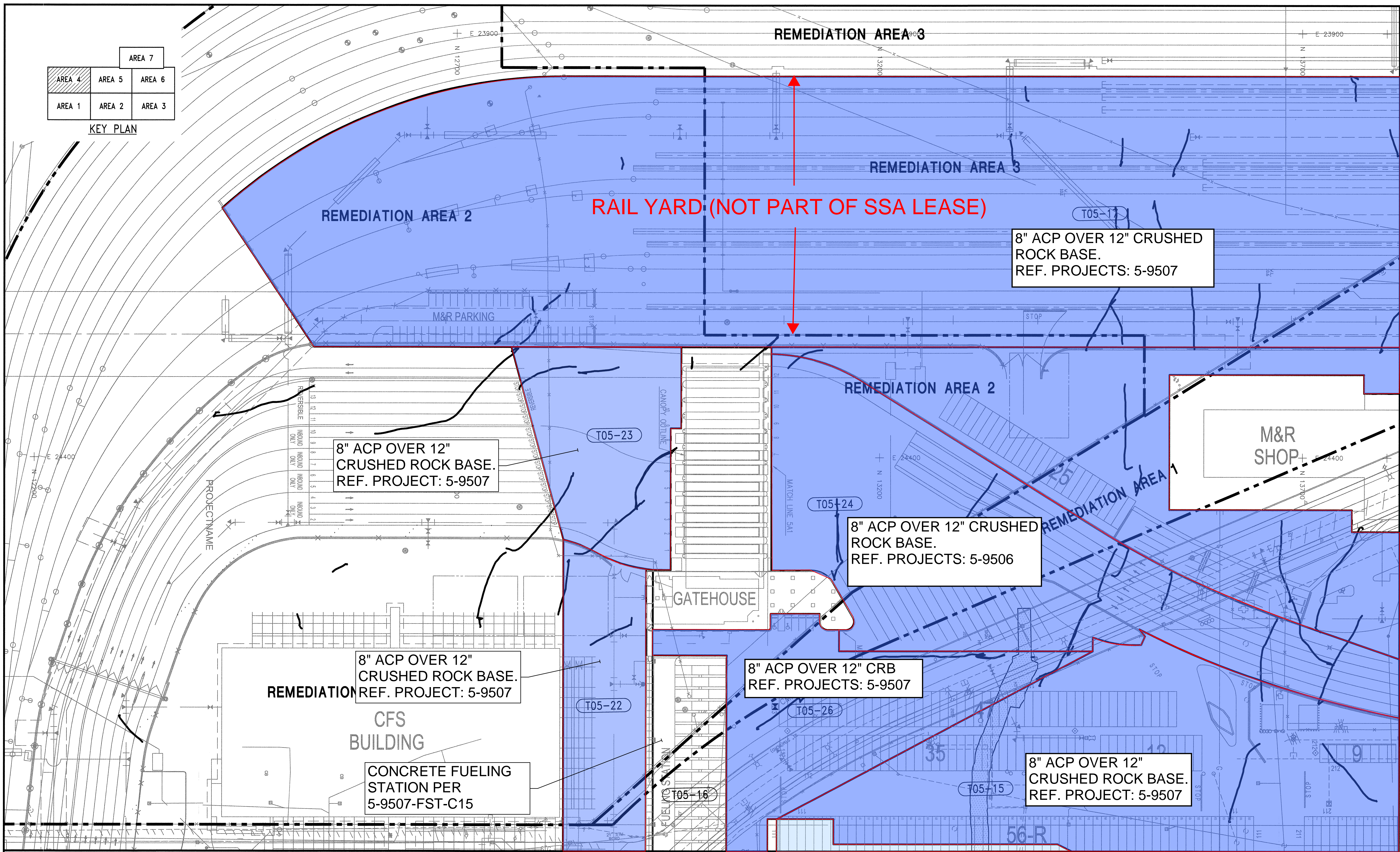
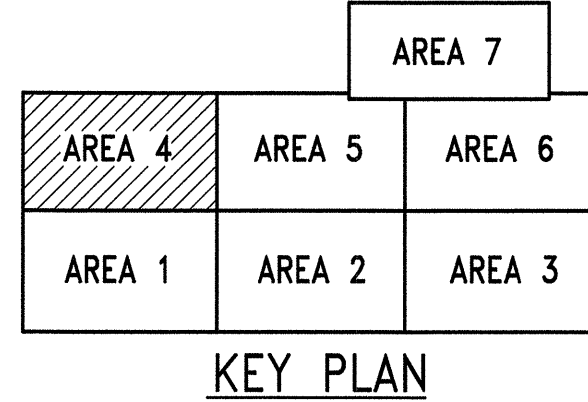
CALL 48 HOURS BEFORE YOU DIG 27+00 29+00
1-800-424-5555

kpff

1601 5th Avenue, Suite 1300
Seattle, Washington 98101
(206) 382-0600 Fax (206) 382-0500

**TERMINAL 5
PAVEMENT THICKNESS HISTORY EXHIBIT
DRAFT
2019-05-16 REV1**

050201C059.DWG 7-09-02



RAIL YARD (NOT PART OF SSA LEASE)

8" ACP OVER 12" CRUSHED ROCK BASE.
REF. PROJECTS: 5-9507

8" ACP OVER 12" CRUSHED ROCK BASE.
REF. PROJECT: 5-9507

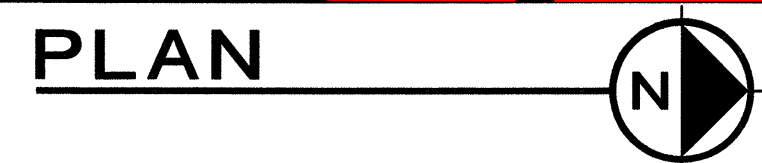
8" ACP OVER 12" CRUSHED ROCK BASE.
REF. PROJECTS: 5-9506

8" ACP OVER 12" CRUSHED ROCK BASE.
REF. PROJECT: 5-9507

8" ACP OVER 12" CRB
REF. PROJECTS: 5-9507

8" ACP OVER 12" CRUSHED ROCK BASE.
REF. PROJECT: 5-9507

CONCRETE FUELING STATION PER 5-9507-FST-C15



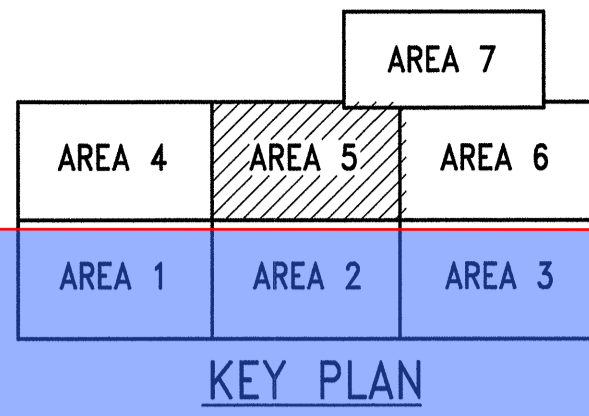
7-09-02
CALL 48 HOURS BEFORE YOU DIG
1-800-424-5555

kpff

1601 5th Avenue, Suite 1300
Seattle, Washington 98101
(206) 382-0600 Fax (206) 382-0500

**TERMINAL 5
PAVEMENT THICKNESS HISTORY EXHIBIT
DRAFT
2019-05-16 REV1**

MATCH LINE



REMEDIATION AREA 3

8" ACP OVER 12" CRUSHED ROCK BASE.
REF. PROJECTS: 5-9507

REMEDIATION AREA 1

RAIL YARD (NOT PART OF SSA LEASE)

REMEDIATION AREA 4

8" ACP OVER 12" CRUSHED ROCK BASE.
REF. PROJECTS: 5-9507

FULL DEPTH REPLACEMENT AREAS
7" ACP OVER 11" BASE
REF. PROJECT: 5-0201

8" ACP OVER 12" CRUSHED ROCK BASE.
REF. PROJECTS: 5-9507,
5-0201

M&R CONTROL TOWER

8" ACP OVER 12" CRUSHED ROCK BASE.
REF. PROJECTS: 5-9507

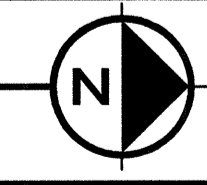
8" ACP OVER 12" CRUSHED ROCK BASE.
REF. PROJECTS: 5-9301, 5-0201

8" ACP OVER 12" CRUSHED ROCK BASE.
REF. PROJECTS: 5-9507

8" ACP OVER 12" CRUSHED ROCK BASE.
REF. PROJECTS: 5-9507,
5-0201

MATCH LINE - SEE SHEET C-58

PLAN



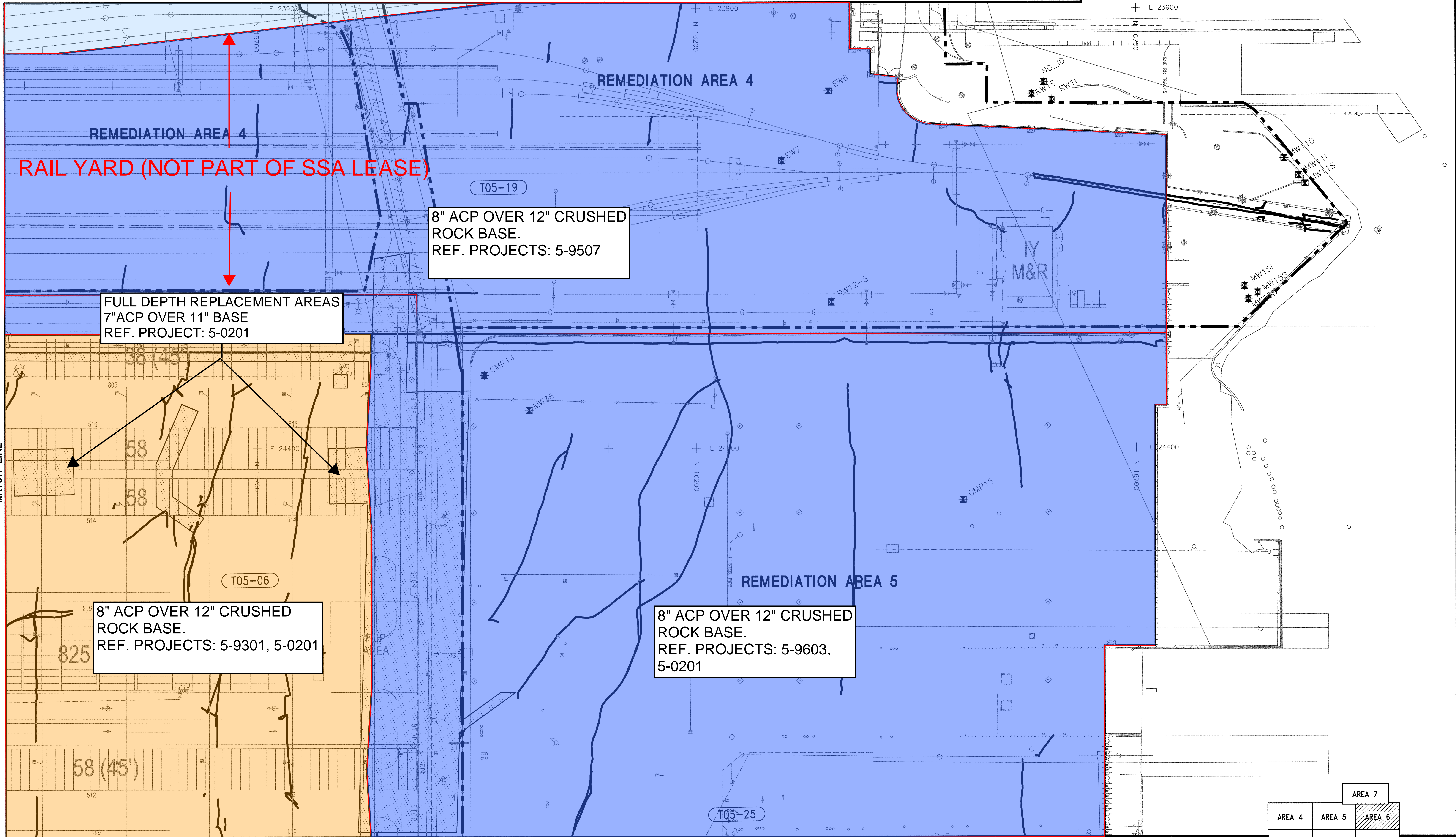
7-09-02
050201C061.DWG

CALL 48 HOURS BEFORE YOU DIG
1-800-424-5555

kpff
1601 5th Avenue, Suite 1300
Seattle, Washington 98101
(206) 382-0600 Fax (206) 382-0500

TERMINAL 5
PAVEMENT THICKNESS HISTORY EXHIBIT
DRAFT
2019-05-16 REV1

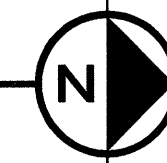
MATCH LINE



MATCH LINE

MATCH LINE

PLAN



7-09-02 050201C062.DWG

CALL 48 HOURS BEFORE YOU DIG 1-800-424-5555

kpff

1601 5th Avenue, Suite 1300
Seattle, Washington 98101
(206) 382-0600 Fax (206) 382-0500

**TERMINAL 5
PAVEMENT THICKNESS HISTORY EXHIBIT
DRAFT
2019-05-16 REV1**

	AREA 7	
AREA 4	AREA 5	AREA 6
AREA 1	AREA 2	AREA 3

KEY PLAN

REMEDATION AREA 3

+ E 23400
N 15200

REMEDATION AREA 1

REMEDATION AREA 4

4" ACP OVER 8" CRUSHED
ROCK BASE.
REF. PROJECTS: 5-9507

REMEDATION AREA 4
NOT PART OF SSA LEASE

MATCH LINE

MATCH LINE



7-09-02
050201C063.DWG

CALL 48 HOURS
BEFORE YOU DIG
1-800-424-5555

kpff
1601 5th Avenue, Suite 1300
Seattle, Washington 98101
(206) 382-0600 Fax (206) 382-0500

TERMINAL 5
PAVEMENT THICKNESS HISTORY EXHIBIT
DRAFT
2019-05-16 REV1